



**DAMIR VIŠIĆ, ing. pom. prom.**

**Stepinčeva 71, SPLIT**

**stalni sudski vještak za pomorski promet i procjenitelj vrijednosti plovila**

**Naručitelj: Stečajna masa iza PERFORMANCE  
YACHTING d.o.o. u stečaju  
stečajni upravitelj Ante Gabelica  
Domovinskog rata 52  
21000 Split**

## **IZVJEŠTAJ VJEŠTAKA**

**PREDMET:**

**Procjena vrijednosti jahte na jedra More 55**

### **EAGLE RAY**



**Split, 18. studenog 2024.**

## Sadržaj

<b>1. NALAZ .....</b>	<b>2</b>
<b>1.1 OSNOVNI PODACI .....</b>	<b>2</b>
<b>1.2 ELEMENTI ZA IZRADU PROCJENE.....</b>	<b>3</b>
<b>1.3 ZATEČENO STANJE.....</b>	<b>3</b>
<b>1.4 POPIS OPREME.....</b>	<b>4</b>
<b>2. MIŠLJENJE.....</b>	<b>4</b>
<b>3. PROCJENA VRIJEDNOSTI.....</b>	<b>4</b>
<b>4. PRILOG slike.....</b>	<b>5</b>
<b>popis standardne opreme.....</b>	<b>9</b>

# NALAZ I MIŠLJENJE

## 1. Nalaz

Prema narudžbi naručitelja, g. Ante Gabelice, stečajnog upravitelja društva Stečajna masa iza Performance Yachting d.o.o. u stečaju iz Splita, pregled plovila obavljen je prema priloženim mi dokumentima te fotografijama i video zapisima koje je 03.07.2024. i 03.08.2024. napravio predstavnik osiguravatelja Allianz d.d., g. Neven Grubišić. Od vještačenja se traži procjena tržišne vrijednosti plovila.

### 1.1 OSNOVNI PODACI

Ime plovila:	<b>EAGLE RAY</b>
Zastava:	<b>Hrvatska</b>
Luka upisa:	<b>Šibenik</b>
NIB:	<b>95022</b>
Broj trupa:	<b>---- (nije poznat) ----</b>
Vlasnik:	<b>PERFORMANCE YACHTING d.o.o. – u stečaju;</b> Domovinskog rata 52, Split
Tip:	<b>Jahta</b>
Brodograditelj:	<b>Zagreb</b>
Model:	<b>More 55</b>
Godina proizvodnje:	<b>2019.</b>
Dužina:	<b>16,00 m</b>
Širina:	<b>5,00 m</b>
Gaz:	<b>2,70 m</b>
Bruto tonaža:	<b>22,34</b>
Područje plovidbe:	<b>III</b>
Materijal:	<b>Stakloplastika</b>
Pogonski stroj:	<b>Yanmar 4JH110-KMH4A</b>
Broj motora:	<b>E5393(?)</b>
Snaga:	<b>81 kW</b>

#### ***Napomena:***

*navedeni podaci nisu mjereni, nego su uneseni iz brodskih dokumenata.*

## 1.2 ELEMENTI ZA IZRADU PROCJENE

Kod izrade procjene vrijednosti ovog plovila uzeo sam u obzir sljedeće elemente:

- tip plovila
- opće stanje plovila
- nivo opremljenosti
- tehničku ispravnost plovila
- kvalitetu ugrađenih materijala i opreme
- kvalitetu izrade
- nominalne vrijednosti istog ili sličnih modela

## 1.3 ZATEČENO STANJE

Za potrebe ove procjene pristup plovilu mi nije bio omogućen pa je procjena rađena prema priloženom mi Izvratku iz upisnika brodova sa stanjem na dan 29. studenog 2023. te fotografijama i video materijalima koje je 03.07.2024. i 03.08.2024. snimio predstavnik osiguravatelja Allianz d.d., gospodin Neven Grubišić. Fotografije su snimane paralelno za dva plovila, EAGLE RAY i MANTA RAY I, istog modela i vlasnika i na njima su uglavnom snimljeni detalji te se ne može na svim snimkama jasno razaznati na koji se od ova dva plovila pojedina fotografija odnosi. Međutim, prema priloženom je jasno kako su oba plovila u gotovo jednakom stanju. Serijski broj trupa plovila u dokumentaciji nije naveden niti ga se na priloženoj fotografiji može jasno razaznati (slika 1). Ugrađeni motor je Yanmar 4JH110-KMH4A snage 81 kW. Serijski broj motora u dokumentima nije upisan, a na fotografiji je vidljiv samo djelomično E5393(?), bez zadnje znamenke (slika 2). Prema brojaču, motor je imao 2153,4 radnih sati (slika 3). Po podacima u Izvratku iz upisnika brodova datum prve registracije bio je 03.09.2019., a kao navedena nabavna vrijednost plovila upisano je 3.174.032,62 HRK, dakle, približno 339.000,00 € + 25% PDV-a, kolika je bila i kataloška vrijednost standardno opremljenog novog plovila. Od 25.08.2020. na plovilu postoji evidentiran teret, a kao korisnik plovila navedena je charter tvrtka Black Pearl Charter d.o.o. iz Zagreba. Osnovna namjena plovila su gospodarske potrebe, a za plovilo u upisniku nije evidentiran niti jedan tehnički pregled. Na palubi nisu vidljivi tragovi oštećenja ili ranijih bitnijih sanacija (slika 4). U kokpitu i opremi također nema vidljivih oštećenja ni tragova neke ranije bitnije sanacije (slika 5). Jarbol i oprema jarbola postavljeni su pravilno i uredni su (slika 6). Nikakvi tragovi oštećenja ili nekih ranijih sanacija nisu

vidljivi ni na interijeru (slike 7 – 13). Santine su čiste i na metalnom ojačanju i vijcima kobilice nema nikakvih deformacija ni tragova korozije (slika 14). Na fotografijama od 03.08.2024. se vidi kako da je lantina u razini bočne pripone deformiran i skrivljena ulijevo (slike 15 i 16).

#### 1.4 POPIS OPREME

Popis standardno opremljene jahte na jedra More 55 naveden je u prilogu.

## 2. Mišljenje

Nabavna vrijednost standardno opremljenog plovila bila je 339.000,00 €, u što nisu uključena jedra kojima je procijenjena vrijednost bila 15.000,00 €. Prosječna vrijednosti plovila ovog tipa starog pet godina, ovisno o nivou opremljenosti, načinu korištenja, tehničkoj ispravnosti, kvaliteti izrade i općem stanju plovila i opreme, kreću se od 50 – 68% vrijednosti novog. S obzirom da se plovilo cijelo vrijeme bilo u charter floti, na što ukazuje i relativno veliki broj radnih sati, ali i prema prikazanim mi materijalima dosta dobro očuvano i u relativno dobrom stanju, procjenjujem da je njegova vrijednost 60% vrijednosti novog. Međutim, zbog realnog poskupljenja repromaterijala plovila u proizvodnji u međuvremenu se vrijednost ovakvih plovila uvećala za 15%. Nadalje, s obzirom da je lantina na ovom plovilu neupotrebljiva potrebno ju je zamijeniti novom, što joj umanjuje vrijednost za 3.000,00 €.

## 3. Procjena vrijednosti

Uzimajući sve navedeno u obzir, procjenjujem da je vrijednost pregledane jahte na jedra More55 imena EAGLE RAY u neto vrijednosti, bez PDV-a, 241.260,00 €, odnosno s uračunatim PDV-om: **301.575,00 €**

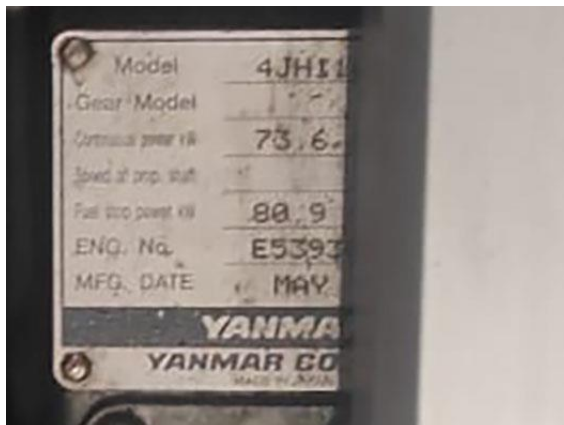
Stalni sudski vještak  
Damir Višić, ing. pom. prometa



#### 4. Prilog - slike



slika 1



slika 2



slika 3



slika 4



slika 5





slika 6



slika 7



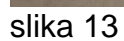
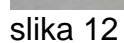
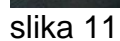
slika 8



slika 9



slika 10







slika 14



slika 15



slika 16

**- popis standardne opreme**

## More 55

## standard specification

**CONSTRUCTION****HULL&DECK**

VACUUM INFUSED EPOXY BASED VINYLESTER CORED GRP WHITE (ISOPHTHALIC) GELCOAT WITH DECORATIVE BANDS OPTIMAL STRENGTH/WEIGHT RATIO - ACHIEVED BY USING MULTIAXIAL AND UNIDIRECTIONAL E-GLASS FIBERS TRANSPARENT GEL COAT UNDER WATERLINE FOR VISUAL QUALITY CONTROL THERMAL AND SOUND INSULATED HULL AND DECK STAINLESS STEEL FRAME BELLOW SALOON FLOOR AS REINFORCEMENT IN WAY OF KEEL, TAKING ALL LOADS FROM KEEL STEPPED MAST TO STRESS AREAS (WHERE WINCHES AND MAJOR DECK FITTINGS ARE FIXED) REINFORCED WITH ALUMINUM OR OKUME PLYWOOD HULL AND DECK ARE BONDED WITH STRUCTURAL GLUE AND ADDITIONALLY LAMINATED

**DECK EQUIPMENT**

TEAK ON COCKPIT SEATS STAINLESS STEEL BOW FITTING (WITH ANCHOR/CHAIN ROLLER) AND ATTACHMENT FOR ASYMMETRICAL SPINNAKER STAINLESS STEEL CHAINPLATES SELF-DRAINING ANCHOR/CHAIN LOCKER 12 STAINLESS STEEL STANCHION BASES RAIL GATES ON BOTH SIDES 2 OPENABLE PORTLIGHTS IN COCKPIT 12 PORTLIGHTS ON HULL 2 OPENABLE PORTLIGHTS ON SIDE COAVHROOF 6 SIZE 41 FLUSH HATCHES 1 SIZE 70 FLUSH HATCHES 3 SIZE 60 FLUSH HATCHES

**COCKPIT**

STORAGE LOCKER IN MID COCKPIT DRY STORAGE LOCKERS ON PS & SB SIDE OUTBOARD DRAINED TWO GAS BOTTLES (PS) COMPARTMENT FOLDABLE HELMSMAN FOOTSTOPS RUDDER STOCK HEAD FOR INSTALLING THE EMERGENCY TILLER TWO STEERING PEDESTALS SINGLE LEVER ENGINE CONTROL INSIDE RECESS ON COCKPIT SIDE SWIMMING PLATFORM WITH SWIMMING LADDER MANUALLY OPERATED DINGY 2,8M STORAGE BELLOW COCKPIT

**MAST**

PERFORMANCE SILVER ANODIZED ALUMINUM MAST FRACTIONAL TRIPLE SWEEP BACK (APPROX. 20°) SPREADERS IN ALUMINUM, DYFORM RIGGING, POLYESTER SHEETS, MAIN SAIL AND JIB HALYARD IN VECTRAN THE MAST STEP BOLTED TO THE STAINLESS STEEL KEEL FRAME

**BOOM**

SILVER ANODIZED ALUMINUM BOOM TWO (INTERNAL) REEF LINES FOR SINGLE LINE REEFING SYSTEM; ONE CLEW DOUTHAIL DEVICE THE GAS PRESSURED BOOM VANG WITH AN OUTER PURCHASE BLOCK SYSTEM

**STANDING RIGGING**

DISCONTINUOUS STAINLESS STEEL DYFORM RIGGING INCLUDES: THRU DECK JIB FURLER HYDRAULIC BACKSTAY ADJUSTER/TENSIONER

**RUNNING RIGGING**

ALL HALYARDS, REEF LINES, TENSIONERS AND CONTROL LINES ARE HIDDEN BELLOW DECK AND LED TO THE COCKPIT (WINCHES)

**THE STANDARD MAST INCLUDES:**

- MAIN HALYARD
- SPI HALYARD
- JIB HALYARD
- BOOM TOPPING LIFT

**SHEETS & ROPES:**

- MAIN SHEET
- JIB SHEET
- TWO REEFING LINES
- DOUTHAIL

FULL WIDTH MAIN SHEET TRAVELER HIDDEN BELLOW COCKPIT SOLE WITH POSSIBILITY OF EASY TRANSFORMING INTO MID BOOM SHEETING SYSTEM WITH POSSIBILITY OF BIG BIMINI COVERING WHOLE COCKPIT

**STOPPERS (CLUTCHES)**

- 10 X SPINLOCK

2X5 SHEAVE DECK ORGANIZERS

**WINCHES**

- 2 HARKEN PRIMARIES/GENOA SHEET 2-SPEED WINCHES, SIZE 65
- 2 HARKEN SECONDARY 2-SPEED WINCHES SIZE 55
- 2 HARKEN MAINSHEET 2-SPEED WINCHES SIZE 55

3 WINCH HANDLES WITH PVC HANDLE HOLDERS

**SHIP EQUIPMENT****STEERING SYSTEM**

SINGLE RUDDER SYSTEM SEMI-BALANCED RUDDER WITH SELF ALIGNING ROLLER BEARINGS DOUBLE STEERING WHEEL BLACK GFC 1000MM EMERGENCY TILLER IN STAINLESS STEEL

**KEEL**

CAST IRON FIN WITH LEAD BULB, DRAFT 2,7M

**MAGNETIC COMPASS**

NAVIGATION LIGHTS (BOW PORT, BOW STBD, STERN), RUNNING LIGHT, ANCHOR LIGHT, DECK LIGHT, ALL LED

**ANCHORING & MOORING EQUIPMENT**

ANCHOR (GALVANIZED), 25 KG ANCHOR CHAIN (GALVANIZED), 50 M X 10 MM STAINLESS STEEL ANCHOR ARM ELECTRIC ANCHOR WINDLASS 6 X MOORING CLEATS

**INTERIOR FURNITURE, INVENTORY**

STANDARD INTERIOR LAYOUT (A): 4 CABINS AND 4 HEAD UNITS LARGE SALOON WITH I SHAPED KITCHEN FOREFRONT INTERIOR JOINERY: MARINE GRADE WATER PROOF CORE, FACED WITH SELECTED NATURAL TEAK VENEER ALL BULKHEADS IN OKUME PLYWOOD

FORE PEAK SPACE AS SAIL LOCKER

CUSHIONS ARE MADE IN HIGH QUALITY FOAM WITH SELECTED UPHOLSTERY

FLOORBOARDS ARE ALUCORE HONEYCOMB 15 MM THICK ALUMINUM FACED WITH ULTRAPAS IN WOOD COLOUR

**FORWARD CABINS**

FORWARD CABINS EASY CONVERTIBLE IN ONE BIG CABIN BY REMOVING SEGMENTAL BULKHEAD LOCKERS UNDER BERTH WARDROBES (PORT & STBD SIDE) WITH SHELVES AND HANGERS HANGING LOCKERS, SHOE LOCKERS

**FORWARD HEAD UNITS**

GRP WASH BASINS CORIAN WASH BASIN BOARDS SEPARATE SHOWER AREA HOT&COLD FRESH WATER MIXING TAPS ALSO WITH SHOWER UNIT SHOWER AUTOMATICALLY DRAINED BY ELECTRIC PUMP MANUAL MARINE TOILET FRONT OPENING DOUBLE LOCKER - PLACED ABOVE WASH BASIN - WITH MIRRORS MOUNTED ON FRONTS WASTE HOLDING TANK (APP. 55 L) FITTED WITH EXTERNAL NON CONTACT SENSORS AND TANK LEVEL WATCH, DECK OUTLET TEAK SHOWER GRATING

**AFT CABIN (STBD & PORT)**

DOUBLE BERTH WITH SHELVE AND LOCKERS ABOVE BED ALONG HULL SIDE LARGE HANGING LOCKER AND SHELVE ABOVE LOCKERS UNDER BERTH

**AFT HEAD UNITS**

GRP WASH BASIN CORIAN WASH BASIN BOARD HOT&COLD FRESH WATER MIXING TAPS SHOWER AUTOMATICALLY DIRECTLY DRAINED BY ELECTRIC PUMP MANUAL MARINE TOILET FRONT OPENING DOUBLE LOCKER (WITH MIRRORRED DOORS) PLACED ABOVE TOILET/SHOWER SEAT WASTE HOLDING TANK (APP. 65 L) FITTED WITH EXTERNAL NON CONTACT SENSORS AND TANK LEVEL WATCH, DECK OUTLET

## More 55

## standard specification

**SALOON**

LARGE U-SHAPED SETTEE TO HULL PS SIDE WITH DINING TABLE  
UPPER CABINET SECTIONS WITH DOORS ALONG HULL SIDES  
STORAGE LOCKERS UNDER SEATS AND BEHIND BACKRESTS

**GALLEY**

GALLEY WITH CORIAN WORK TOP  
TWIN STAINLESS STEEL RECTANGULAR SINKS  
MIXING TAP FOR PRESSURIZED HOT&COLD FRESH WATER  
GAS STOVE (ON GIMBALS) WITH AN OVEN AND THREE BURNERS  
TWO REFRIGERATORS  
STORAGE LOCKERS - WITH SHELVES AND DOORS - ABOVE WORK  
TOP ALONG HULL SIDE  
STORAGE - WITH SHELVE AND DOOR - BELOW SINKS; WASTE  
BASKET MOUNTED ON STORAGE DOOR

**COMPANIONWAY**

GAS SPRINGED OPENABLE STAIRS AS ENGINE COMPARTMENT  
COVER

**ENGINE COMPARTMENT**

SOUND AND THERMAL INSULATED WITH NON FLAMMABLE FOAM  
MATERIAL  
EASY ACCESSIBLE THROUGH OPENING THE COMPANIONWAY STAIRS  
AND/OR REMOVING THE SIDE HATCHES (PROVIDED IN BOTH AFT  
CABINS)  
PROVIDED WITH AUTOMATIC FIRE EXTINGUISHER  
SPACE FOR GENERATOR INSIDE ENGINE COMPARTMENT

**SANITARY SYSTEMS; DISCHARGE SYSTEMS**

HOT&COLD PRESSURIZED FRESH WATER SYSTEM  
VENTILATED FRESH WATER TANKS PLACED BELLOW BERTH IN THE  
FORWARD CABIN FOR A TOTAL CAPACITY OF APP. 750L WITH  
INSPECTION HOLES/COVERS  
TANK LEVEL GAUGE(S) (PLACED ON ELECTRIC SWITCHBOARD)  
MIXING FRESH WATER TAPS ARE FITTED IN BOTH HEAD UNITS AND  
IN THE GALLEY  
SHOWER WITH HOT&COLD FRESH WATER CAN BE FITTED IN  
COCKPIT  
HOT WATER TANK CAPACITY OF 30 L HEATED BY INTEGRATED  
HEATER RUN WITH 220V SHORE POWER OR BY ENGINE COOLING  
(FRESH) WATER  
SHOWER BASINS ARE DRAINED DIRECT INTO THE SEA BY ELECTRIC  
SHOWER PUMPS  
ELECTRIC SHOWER PUMPS ARE OPERATED BY AUTOMATIC SWITCH  
SHOWER IN COCKPIT (HOT AND COLD WATER)

**MACHINERY MAIN COMPONENTS**

YANMAR ENGINE 80HP WITH SAIL DRIVE SD 60  
GEAR/GAS LEVER CONTROL IS PLACED IN COCKPIT  
ALTERNATOR 80A  
3 BLADE FIXED PROPELLER

**SYSTEMS FOR MACHINERY MAIN COMPONENTS**

2 FUEL OIL TANKS IN STAINLESS STEEL FOR A TOTAL CAPACITY OF  
APP. 470 L  
TANK INSPECTION HOLE/COVER WITH INCORPORATED FUEL FLOAT  
TANK LEVEL GAUGE (PLACED ON ELECTRIC SWITCHBOARD)  
FUEL OIL FILTER WITH WATER SEPARATOR

**SHIP SYSTEMS****BILGE SYSTEMS**

ELECTRIC BILGE PUMP, OPERATED BY AUTOMATIC AND/OR MANUAL  
SWITCH  
ELECTRIC BILGE PUMP FOR AFT BILGE OPERATED BY AUTOMATIC  
AND/OR MANUAL SWITCH  
HAND OPERATED BILGE PUMP IS POSITIONED IN THE COCKPIT

**ELECTRICAL SYSTEMS****24/12 V DC SYSTEM**

LED LIGHTS IN WHOLE INTERIOR  
MAIN SWITCHBOARD INCLUDES LED INDICATORS AND  
THERMOMAGNETIC SWITCHES  
12 V SOCKETS  
BATTERY CHARGER

1 x 12V 100 AH ENGINE START BATTERY  
600 AH SERVICE BATTERIES BUNK  
BATTERY SWITCH  
SAFETY BATTERY PROTECTOR ANODE  
EMERGENCY START CROSSOVER SYSTEM

**230 V AC POWER SUPPLY**

230 V AC DISTRIBUTION BOARD  
MAIN CIRCUIT BREAKER  
230 V AC SOCKETS  
SHORE POWER DOCK SIDE CABLE